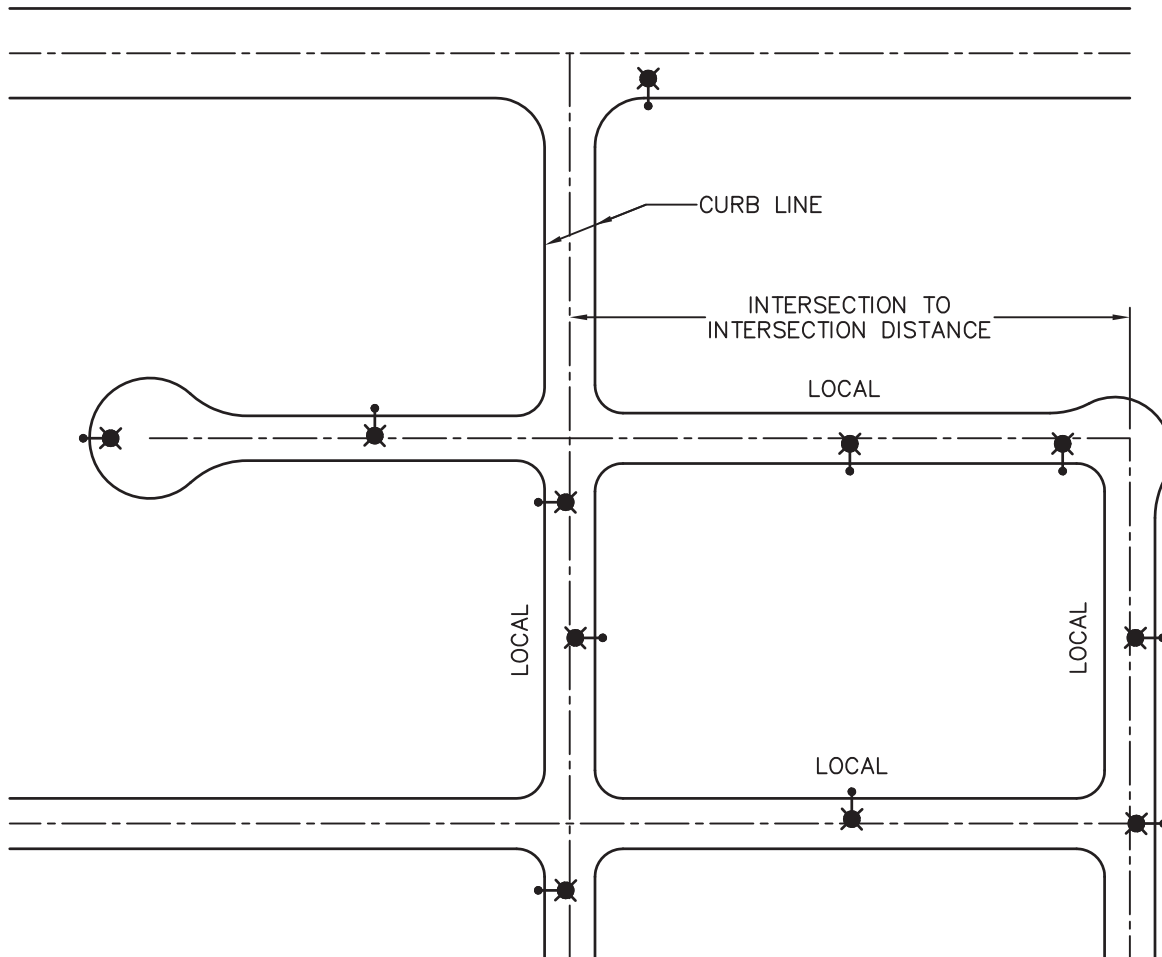


ARTERIAL OR COLLECTOR



NOTES:

1. STREETLIGHTS ON LOCAL STREETS SHALL BE LED – MINIMUM 5,800 LUMEN WITH CUT-OFF LUMINAIRES, LUMINAIRE ELEVATION OF 26', MOUNTED ON MARBLELITE POLES WITH 8' ALUMINUM MAST ARMS. ALTERNATIVE STREETLIGHT POLES ARE SUBJECT TO APPROVAL OF THE CITY ENGINEER.
2. STREETLIGHTS SHALL BE INSTALLED AT LOCATIONS AS DETERMINED BY THE CITY ENGINEER UPON REVIEW OF SUBMITTED IMPROVEMENT PLANS.
3. A STREETLIGHT SHALL BE INSTALLED AT EACH INTERSECTION. SHOULD THE DISTANCE EXCEED 360' BETWEEN INTERSECTIONS AN INTERMEDIATE STREETLIGHT, OR STREETLIGHTS, SHALL BE INSTALLED. SPACING OF STREET LIGHTS BETWEEN INTERSECTIONS WHERE REQUIRED SHALL BE 180' MINIMUM TO 240' MAXIMUM.
4. CUL-DE-SACS SHALL HAVE A MINIMUM OF ONE STREETLIGHT AND SHALL FOLLOW THE ABOVE SPACING REQUIREMENTS.
5. A STREET LIGHTING PLAN PREPARED BY A LICENSED ENGINEER SHALL BE SUBMITTED TO THE CITY. THE PLAN SHALL INCLUDE LOCATIONS OF STREETLIGHTS, PULL BOXES, CONDUIT, METER PEDESTAL, POINT OF SERVICE, AND VOLTAGE DROP CALCULATIONS. THE LIGHTING SYSTEM MUST COMPLY WITH THE CURRENT NATIONAL ELECTRICAL CODE (NEC) AND THE CALIFORNIA ELECTRICAL CODE (CEC).
6. STREET LIGHTING SHALL BE DESIGNED TO MINIMIZE THE NUMBER OF METER PEDESTALS.
7. A "WILL SERVE" LETTER FROM SOUTHERN CALIFORNIA EDISON SHALL BE SUBMITTED TO THE CITY PRIOR TO APPROVAL OF STREET LIGHTING PLANS.
8. A MINIMUM SEPARATION OF 20' IS REQUIRED BETWEEN TREES AND STREETLIGHT POLES.
9. ALL STREETLIGHTS INSTALLED OR REPLACED IN THE CENTRAL BUSINESS DISTRICT ARE SUBJECT TO APPROVAL OF THE CITY ENGINEER.

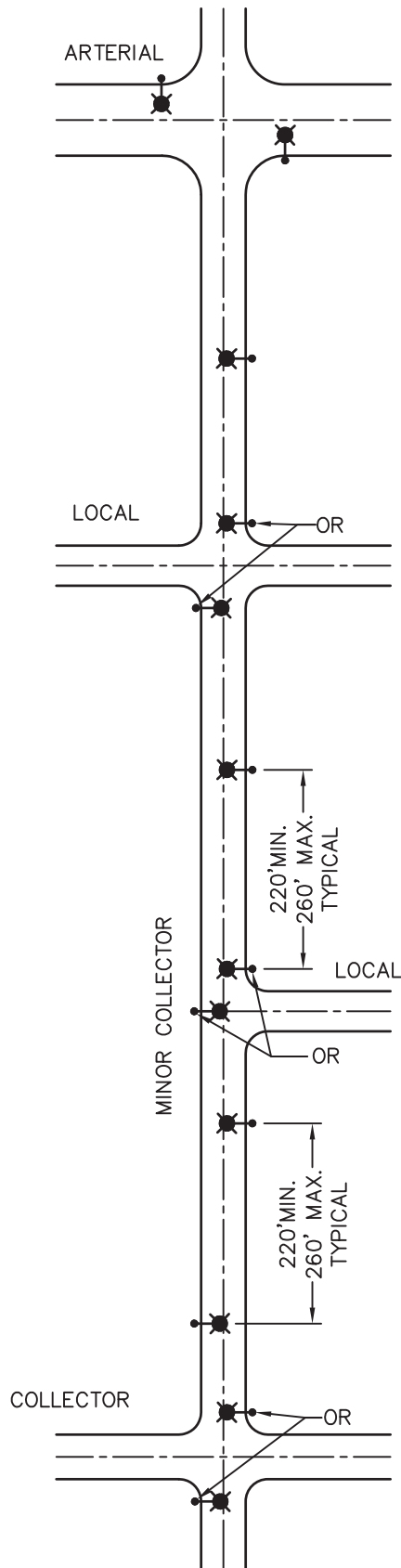
APPROVED BY:  8/18/14
 CITY ENGINEER R.P.E. 81734 DATE

CITY OF VISALIA
 DESIGN & IMPROVEMENT STANDARDS

LOCAL STREET LIGHTING
 RESIDENTIAL & INDUSTRIAL

REVISIONS
 8/18/14
 BK_2013

SL-1



NOTES:

1. STREETLIGHTS ON MINOR COLLECTOR STREETS SHALL BE LED – MINIMUM 9,500 LUMEN WITH CUT-OFF LUMINAIRES, LUMINAIRE ELEVATION OF 29’ MOUNTED ON MARBLELITE POLES WITH 8’ ALUMINUM MAST ARMS.
2. STREETLIGHTS SHALL BE INSTALLED AT LOCATIONS AS DETERMINED BY THE CITY ENGINEER UPON REVIEW OF SUBMITTED IMPROVEMENT PLANS.
3. A STREETLIGHT SHALL BE INSTALLED AT EACH INTERSECTION. STREETLIGHT SPACING SHALL BE 220’ MINIMUM TO 260’ MAXIMUM.
4. STREETLIGHTS SHALL BE STAGGERED FROM SIDE TO SIDE OF STREET, UNLESS OTHERWISE APPROVED BY THE CITY ENGINEER.
5. IF AN INTERSECTION IS SIGNALIZED, A STREETLIGHT SHALL BE INSTALLED ON EACH CORNER AS A PART OF THE TRAFFIC SIGNAL SYSTEM.
6. A STREET LIGHTING PLAN PREPARED BY A LICENSED ENGINEER SHALL BE SUBMITTED TO THE CITY. THE PLAN SHALL INCLUDE LOCATIONS OF STREETLIGHTS, PULL BOXES, CONDUIT, METER PEDESTAL, POINT OF SERVICE, AND VOLTAGE DROP CALCULATIONS. THE LIGHTING SYSTEM MUST COMPLY WITH THE CURRENT NATIONAL ELECTRICAL CODE (NEC) AND THE CALIFORNIA ELECTRICAL CODE (CEC).
7. STREET LIGHTING SHALL BE DESIGNED TO MINIMIZE THE NUMBER OF METER PEDESTALS.
8. A "WILL SERVE" LETTER FROM SOUTHERN CALIFORNIA EDISON SHALL BE SUBMITTED TO THE CITY PRIOR TO APPROVAL OF STREET LIGHTING PLANS.
9. A MINIMUM SEPARATION OF 20’ IS REQUIRED BETWEEN TREES AND STREETLIGHT POLES.
10. ALL STREETLIGHTS INSTALLED OR REPLACED IN THE CENTRAL BUSINESS DISTRICT ARE SUBJECT TO APPROVAL OF THE CITY ENGINEER.

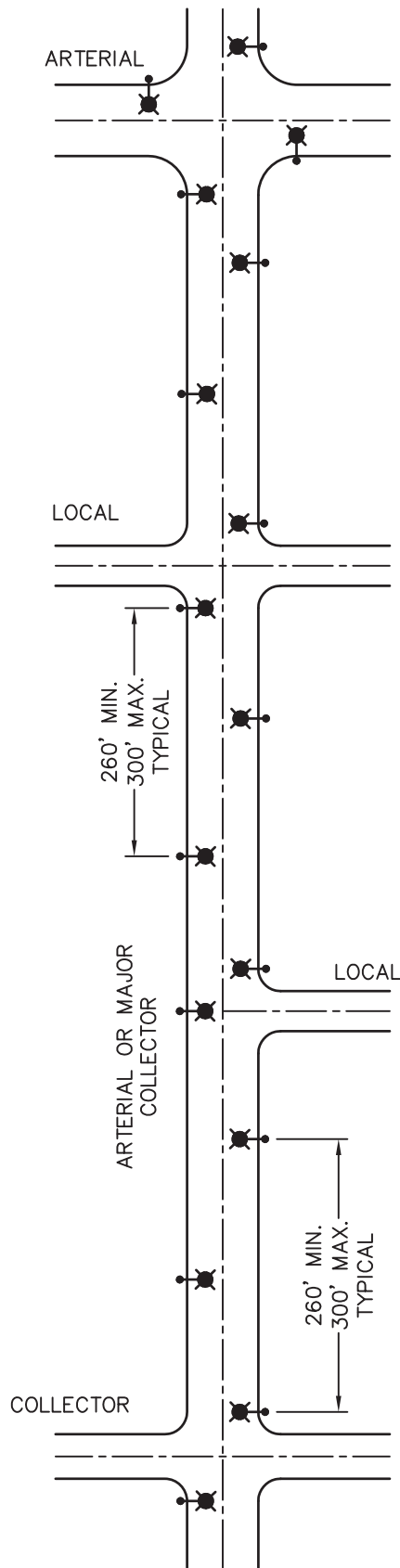
APPROVED BY:  8/18/14
 CITY ENGINEER R.P.E. 81734 DATE

**CITY OF VISALIA
 DESIGN & IMPROVEMENT STANDARDS**

MINOR COLLECTOR STREET LIGHTING

REVISIONS
 8/18/14
 BK_2013

SL-2



NOTES:

1. STREETLIGHTS ON ARTERIAL STREETS SHALL BE LED – MINIMUM 16,000 LUMEN WITH CUT-OFF LUMINAIRES, LUMINAIRE ELEVATION OF 29', MOUNTED ON MARBLELITE POLES WITH 8' ALUMINUM MAST ARMS.
2. STREETLIGHTS ON MAJOR COLLECTOR STREETS SHALL BE LED – MINIMUM 9,500 LUMEN WITH CUT-OFF LUMINAIRES, LUMINAIRE ELEVATION OF 29', MOUNTED ON MARBLELITE POLES WITH 8' ALUMINUM MAST ARMS.
3. STREETLIGHTS SHALL BE INSTALLED AT LOCATIONS AS DETERMINED BY THE CITY ENGINEER UPON REVIEW OF SUBMITTED IMPROVEMENT PLANS.
4. TWO STREETLIGHTS SHALL BE INSTALLED AT EACH INTERSECTION. STREETLIGHT SPACING SHALL BE 260' MINIMUM TO 300' MAXIMUM.
5. STREETLIGHTS SHALL BE INSTALLED ON BOTH SIDES OF THE STREET.
6. IF AN INTERSECTION IS SIGNALIZED, A STREETLIGHT SHALL BE INSTALLED ON EACH CORNER AS A PART OF THE TRAFFIC SIGNAL SYSTEM.
7. A STREETLIGHT PLAN PREPARED BY A LICENSED ENGINEER SHALL BE SUBMITTED TO THE CITY. THE PLAN SHALL INCLUDE LOCATIONS OF STREETLIGHTS, PULL BOXES, CONDUIT, METER PEDESTAL, POINT OF SERVICE, AND VOLTAGE DROP CALCULATIONS. THE LIGHTING SYSTEM MUST COMPLY WITH THE CURRENT NATIONAL ELECTRICAL CODE (NEC) AND THE CALIFORNIA ELECTRICAL CODE (CEC).
8. STREET LIGHTING SHALL BE DESIGNED TO MINIMIZE THE NUMBER OF METER PEDESTALS.
9. A "WILL SERVE" LETTER FROM SOUTHERN CALIFORNIA EDISON SHALL BE SUBMITTED TO THE CITY PRIOR TO APPROVAL OF STREET LIGHTING PLANS.
10. A MINIMUM SEPARATION OF 20' IS REQUIRED BETWEEN TREES AND STREETLIGHT POLES.
11. ALL STREETLIGHTS INSTALLED OR REPLACED IN THE CENTRAL BUSINESS DISTRICT ARE SUBJECT TO APPROVAL OF THE CITY ENGINEER.

APPROVED BY: *[Signature]* 8/18/14
 CITY ENGINEER R.P.E. 81734 DATE

**CITY OF VISALIA
 DESIGN & IMPROVEMENT STANDARDS**

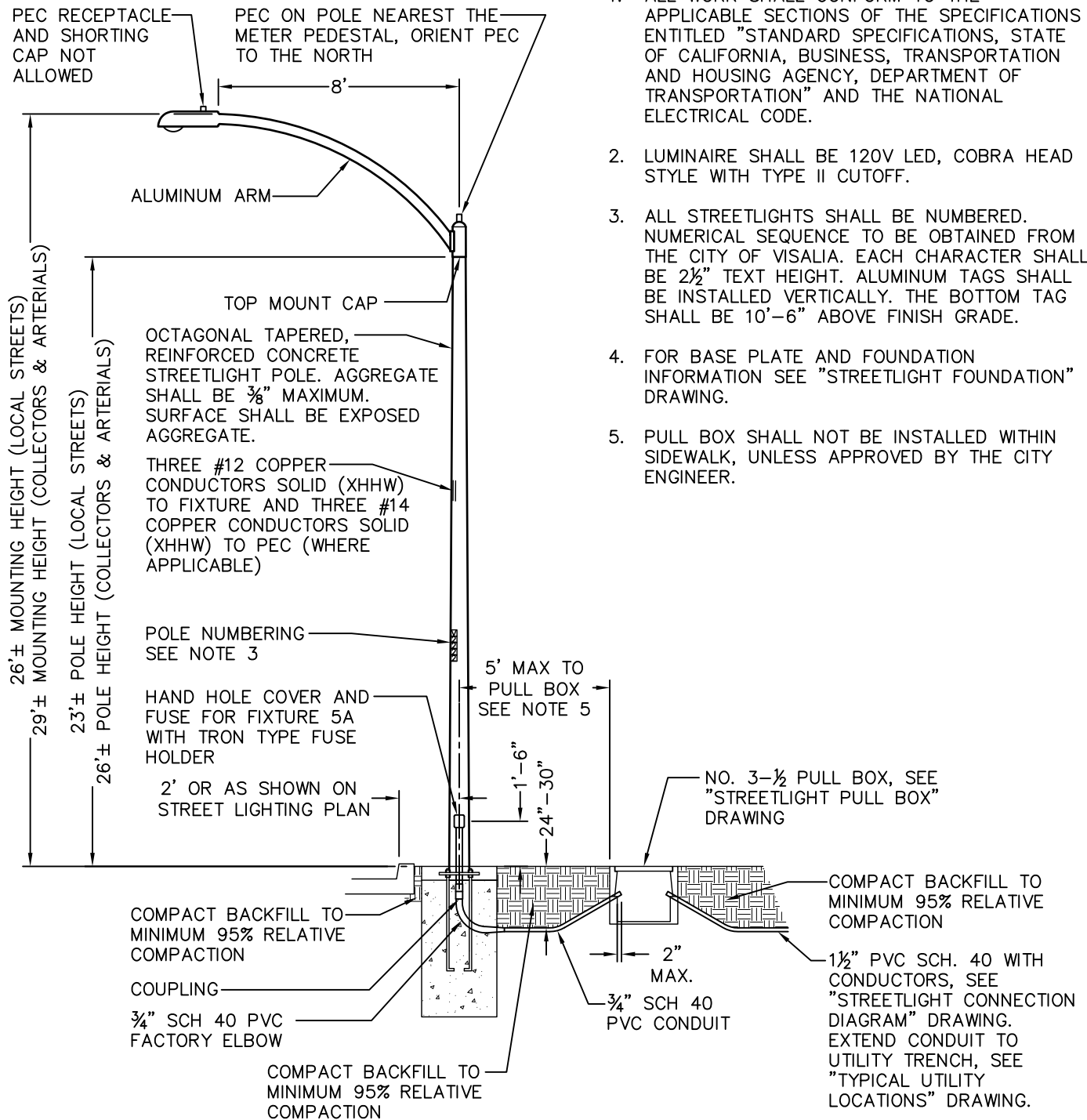
**ARTERIAL AND MAJOR
 COLLECTOR STREET LIGHTING**

REVISIONS
 8/18/14
 BK_2013

SL-3

NOTES:

1. ALL WORK SHALL CONFORM TO THE APPLICABLE SECTIONS OF THE SPECIFICATIONS ENTITLED "STANDARD SPECIFICATIONS, STATE OF CALIFORNIA, BUSINESS, TRANSPORTATION AND HOUSING AGENCY, DEPARTMENT OF TRANSPORTATION" AND THE NATIONAL ELECTRICAL CODE.
2. LUMINAIRE SHALL BE 120V LED, COBRA HEAD STYLE WITH TYPE II CUTOFF.
3. ALL STREETLIGHTS SHALL BE NUMBERED. NUMERICAL SEQUENCE TO BE OBTAINED FROM THE CITY OF VISALIA. EACH CHARACTER SHALL BE 2½" TEXT HEIGHT. ALUMINUM TAGS SHALL BE INSTALLED VERTICALLY. THE BOTTOM TAG SHALL BE 10'-6" ABOVE FINISH GRADE.
4. FOR BASE PLATE AND FOUNDATION INFORMATION SEE "STREETLIGHT FOUNDATION" DRAWING.
5. PULL BOX SHALL NOT BE INSTALLED WITHIN SIDEWALK, UNLESS APPROVED BY THE CITY ENGINEER.

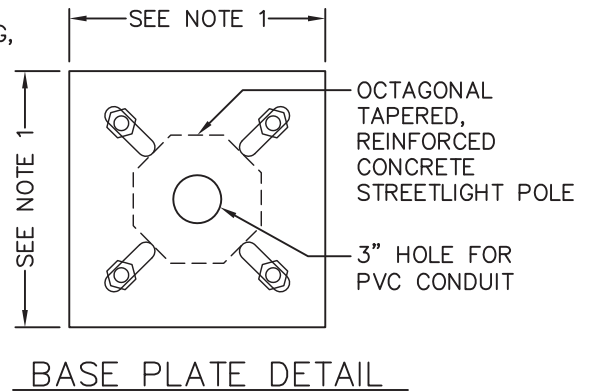
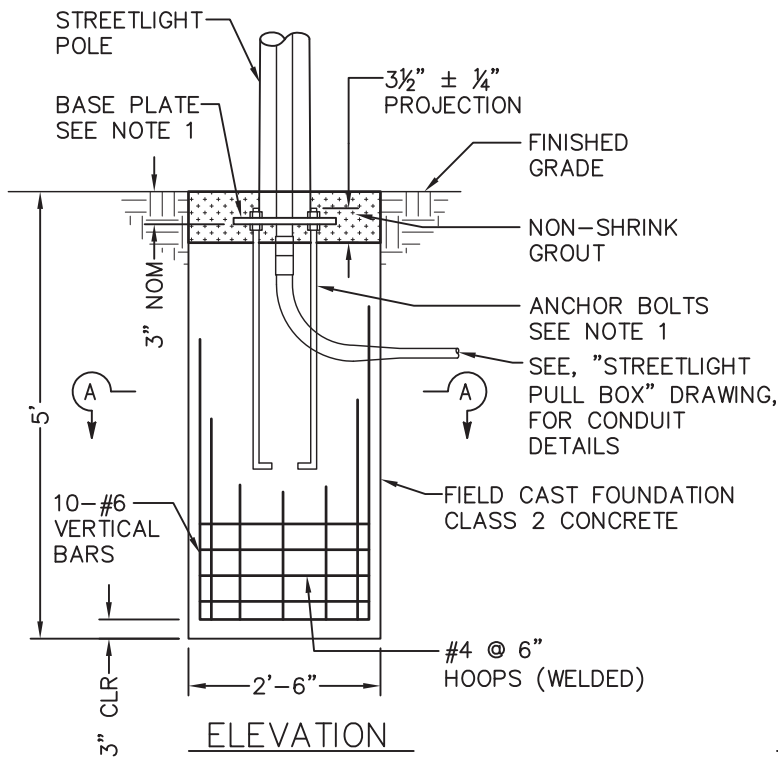
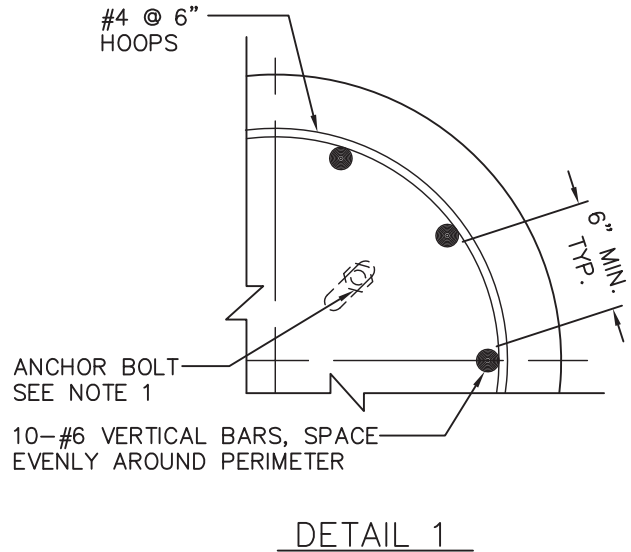
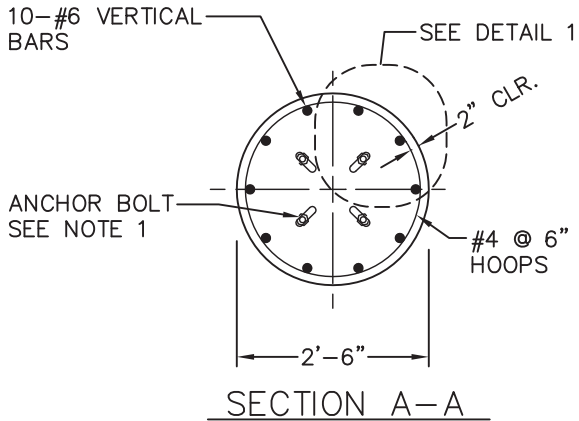


APPROVED BY: *[Signature]* 1/13/15
 CITY ENGINEER R.P.E. 81734 DATE

CITY OF VISALIA
 DESIGN & IMPROVEMENT STANDARDS

STREETLIGHT POLE

REVISIONS	SL-5
1/13/15	
BK_2013	



CAST-IN-DRILLED HOLE PILE FOUNDATION
REINFORCED PILE

NOTE:

1. BASE PLATE AND ANCHOR BOLT DIMENSIONS PER MANUFACTURER SPECIFICATIONS. AT MINIMUM, ANCHOR BOLTS 1"Øx36"x4". INSTALL PER MANUFACTURERS RECOMMENDATION.

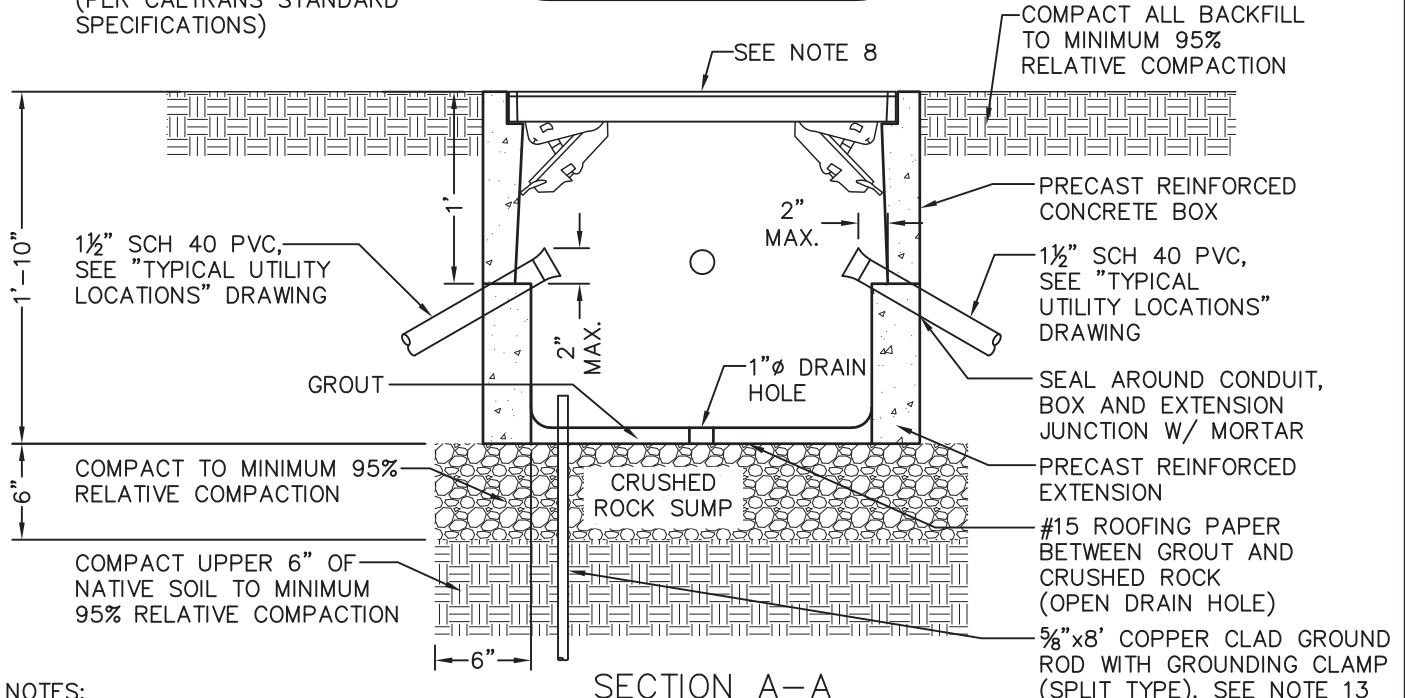
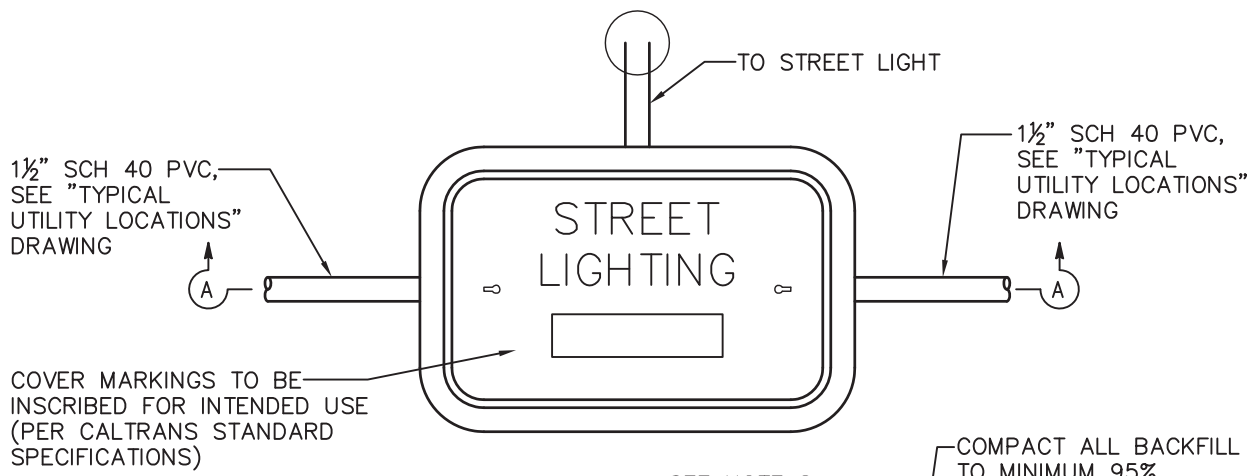
APPROVED BY:  8/18/14
CITY ENGINEER R.P.E. 81734 DATE

CITY OF VISALIA
DESIGN & IMPROVEMENT STANDARDS

STREETLIGHT FOUNDATION

REVISIONS
8/18/14
BK_2013

SL-6



NOTES:

1. PULL BOXES SHALL BE NO. 3-1/2 UNLESS OTHERWISE NOTED ON PLANS.
2. PULL BOXES SHALL BE GROUTED PRIOR TO INSTALLATION OF CONDUCTORS. SLOPED TOWARD THE DRAIN HOLE. PLACE A LAYER OF ROOFING PAPER BETWEEN THE CRUSHED ROCK AND GROUT. OPEN AT DRAIN HOLE.
3. PULL LIDS BEFORE POURING CONCRETE AROUND PULL BOXES.
4. WRAP BOX WITH ROOFING PAPER BEFORE BACKFILLING.
5. PULL BOX SHALL BE TRAFFIC RATED PER CALTRANS STANDARDS IF NOT LOCATED BEHIND A CURB.
6. STREET LIGHT CONDUCTORS SHALL BE INSTALLED CONTINUOUS. SPLICES SHALL ONLY BE PERMITTED AT THE PULL BOX.
7. FIRMLY INSTALL DUCT SEAL AFTER INSTALLATION OF CONDUCTORS.
8. A LOCKING LID SHALL BE INSTALLED. LID SHALL BE GALVANIZED STEEL DIAMOND PLATE, MINIMUM THICKNESS 3/16", WITH MINIMUM TWO CLAMPING JAWS. DELIVER ONE KEY PER PROJECT TO THE CITY OF VISALIA REPRESENTATIVE OR AS DIRECTED BY THE CITY REPRESENTATIVE. LID SHALL BE LOCKJAW BRAND OR APPROVED EQUAL. LID SHALL BE BONDED PER CALTRANS STANDARDS FOR TRAFFIC RATED LIDS.
9. A MINIMUM OF 2' OF SLACK IN EACH CONDUCTOR SHALL BE LEFT IN EACH PULL BOX. TWIST AND PUSH TO BOTTOM OF PULL BOX TO PREVENT WIRE FROM PULLING THROUGH.
10. CONDUIT SHALL HAVE BELL ENDS. EMPTY CONDUITS SHALL BE CAPPED WITHOUT GLUE.
11. CONDUIT SHALL BE MANDREL TESTED AFTER BACKFILL AND COMPACTION IN THE PRESENCE OF THE CITY OF VISALIA REPRESENTATIVE.
12. REFER TO TYPICAL UTILITY LOCATIONS DRAWING FOR PLACEMENT OF STREET LIGHTING CONDUIT IN UTILITY TRENCHES.
13. GROUND RODS REQUIRED ONLY IN PULL BOX FARTHEST FROM THE METER PEDESTAL AND IN THE METER PEDESTAL.

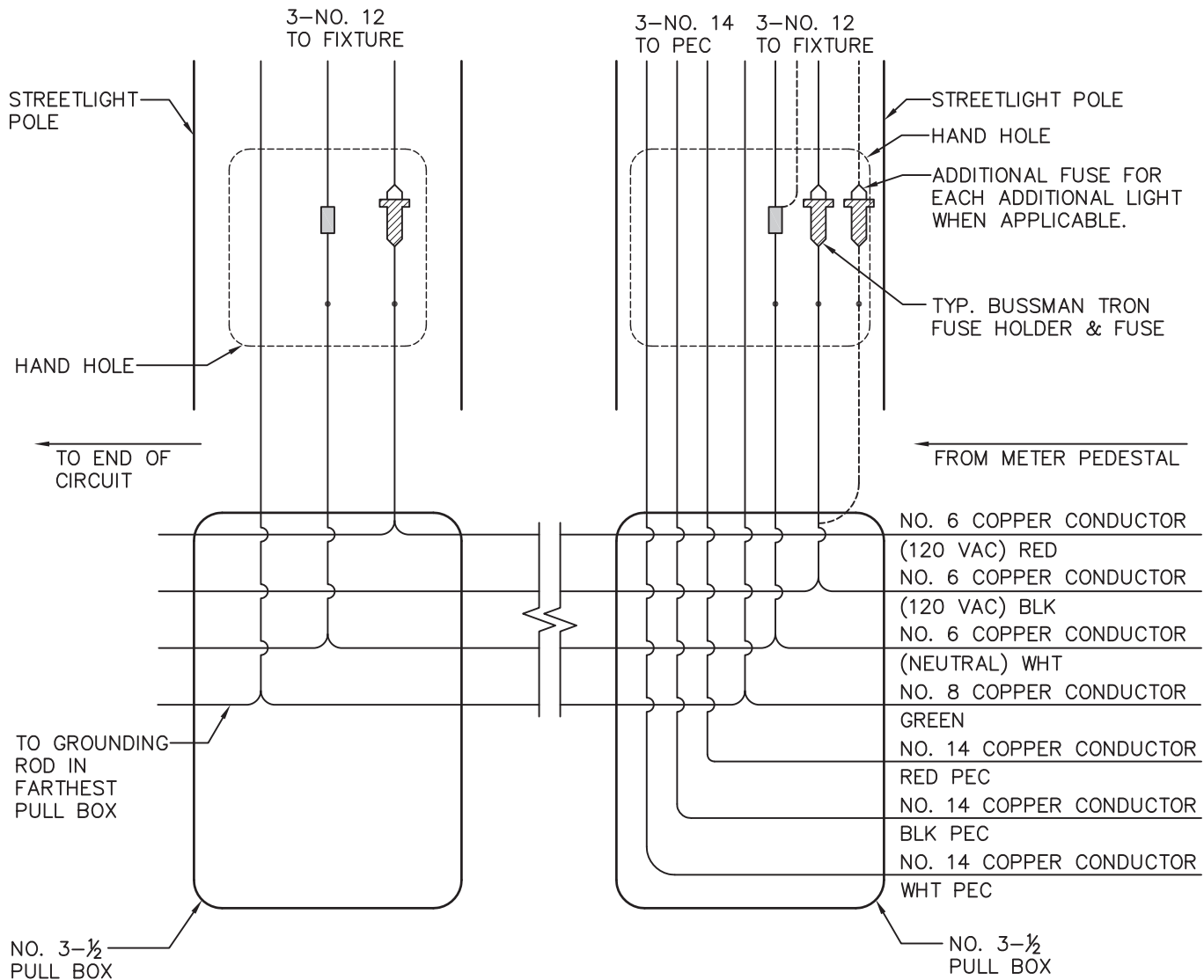
APPROVED BY:  8/18/14
 CITY ENGINEER R.P.E. 81734 DATE

CITY OF VISALIA
 DESIGN & IMPROVEMENT STANDARDS

STREETLIGHT PULL BOX

REVISIONS
8/18/14
BK_2013

SL-7



TYPICAL, POLE AND PULL BOX ALONG RUN

TYPICAL, FIRST POLE AND PULL BOX, NEAREST METER

NOTES:

1. VOLTAGE DROP CALCULATIONS SHALL BE PERFORMED BY A LICENSED ENGINEER AND SUBMITTED TO THE CITY OF VISALIA FOR REVIEW.
2. 240V CIRCUITS ARE NOT STANDARD BUT MAY BE USED IF WARRANTED BY SPECIAL CIRCUMSTANCES. 240V CIRCUITS REQUIRE APPROVAL OF THE CITY ENGINEER AND SHALL BE DESIGNED BY A LICENSED ENGINEER.
3. SPLICES SHALL BE PER CALTRANS STANDARD PLAN ES-13A, TYPE "S" OR TYPE "ST" AS APPLICABLE. SPLICES SHALL BE INSULATED IN ACCORDANCE WITH METHOD "B".
4. SPLIT BOLT CONNECTOR (KEARNEY CONNECTORS, OR EQUAL), MAY BE USED TO SPLICE NO. 8 CONDUCTORS OR LARGER WITH METHOD "B" INSULATION.
5. WIRE NUTS ARE NOT ALLOWED FOR SPLICING.
6. THIS WIRING DIAGRAM DOES NOT SHOW THE SEPARATE GFI CIRCUIT REQUIRED IN THE DOWNTOWN AREA.

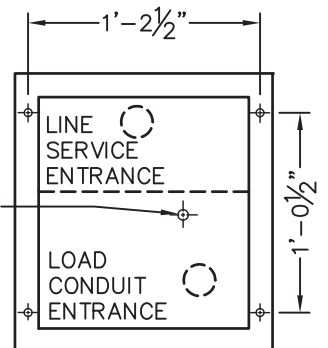
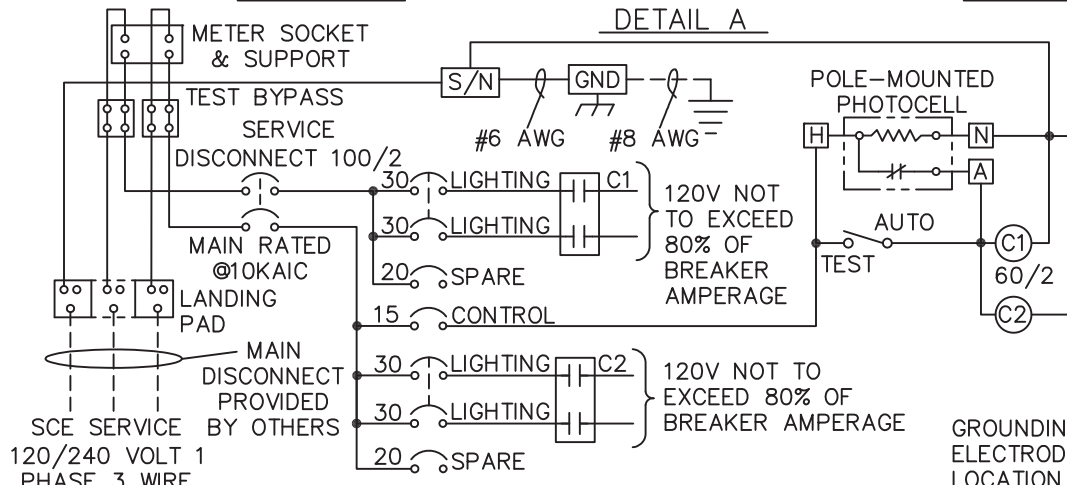
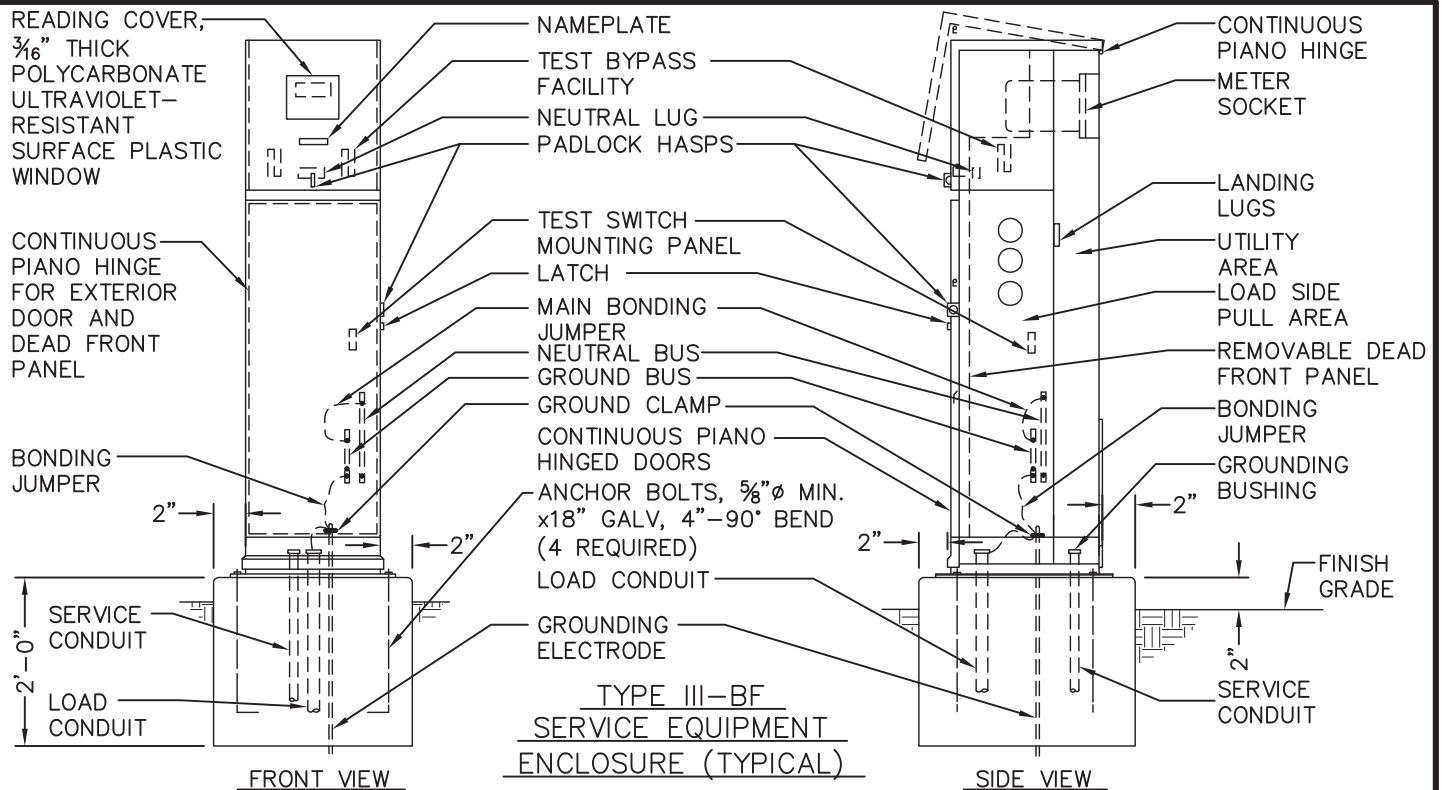
APPROVED BY:  8/18/14
 CITY ENGINEER R.P.E. 81734 DATE

CITY OF VISALIA
 DESIGN & IMPROVEMENT STANDARDS

STREETLIGHT CONNECTION DIAGRAM

REVISIONS
 8/18/14
 BK_2013

SL-8



NOTE: LOAD CURRENT FOR ALL BREAKERS NOT TO EXCEED 80% OF BREAKER AMPERAGE

ENCLOSURE CONSTRUCTION NOTES:

1. EXTERIOR, 1/8" ALUMINUM, AND INTERIOR 14 GA COLD ROLLED STEEL, ELECTRICALLY WELDED AND REINFORCED WHERE REQUIRED.
2. CONSTRUCTION WILL BE NEMA 3R, RAIN-TIGHT.
3. ALL NUTS, BOLTS AND SCREWS WILL BE STAINLESS STEEL.
4. NUTS, BOLTS & SCREWS WILL NOT BE VISIBLE FROM OUTSIDE OF ENCLOSURE.
5. NAMEPLATES WILL BE PROVIDED AS REQUIRED.
6. CONTROL WIRING WILL BE MARKED AT BOTH ENDS BY PERMANENT WIRE MARKERS.
7. A PLASTIC COVERED WIRING DIAGRAM WILL BE ATTACHED TO THE INSIDE OF THE FRONT DOOR.
8. ENCLOSURE WILL BE FACTORY WIRED AND CONFORM TO REQUIRED NEMA AND UL 508A STANDARDS.
9. COLOR TO BE: ANODIZED ALUMINUM
10. CONDUIT FROM SOUTHERN CALIFORNIA EDISON (SCE) POINT OF SERVICE SHALL BE 3" SCH. 80 PVC WITH A PULL ROPE PER SCE STANDARDS.
11. METER PEDESTAL SHALL CONFORM TO EUSERC DRAWING NO. 308.

APPROVED BY:  8/18/14
CITY ENGINEER R.P.E. 81734 DATE

CITY OF VISALIA
DESIGN & IMPROVEMENT STANDARDS

STREETLIGHT METER PEDESTAL
TYPE III-BF

REVISIONS
8/18/14
BK_2013

SL-9